

# NGMA-M

## HIMADRI BHUYAN



**Title:** Peering Out  
**Photographer:** Himadri K. Bhuyan  
**Camera:** Nikon D3200  
**Shutter Speed:** 1/1250 sec  
**F Stop:** f/5.6  
**ISO:** 400  
**Focal Length:** 100mm  
**Photo Story:** Peering out from a hole in a tree trunk, an owl's face looks like a natural camera lens. It's not just the owl but the texture of the tree as well that attracts me towards this image and makes it one of my favorites.



**Title:** The Fern  
**Photographer:** Himadri K. Bhuyan  
**Camera:** Nikon D3200  
**Shutter Speed:** 1/500 sec  
**F Stop:** f/5.6  
**ISO:** 400  
**Focal Length:** 100mm  
**Photo Story:** The fern as a form of life on Earth. This image was captured in Doo Valley situated in the Lower Subansiri district of Arunachal Pradesh. While some ferns are significant weeds, others are grown or gathered for food. Now, a fern frond from an ancient fern forest is captured in a natural habitat, for the foliage and its textures are so well.



**Title:** The Mountains  
**Photographer:** Himadri K. Bhuyan  
**Camera:** Nikon D3200  
**Shutter Speed:** 1/1200 sec  
**F Stop:** f/5.6  
**ISO:** 100  
**Focal Length:** 100mm  
**Photo Story:** That morning we gathered at the Sankarshi view point, West Bengal, India to see the majestic Kanchenjunga Range of the Singla Range as first rays of the morning sun broke in. It appeared as if the mountains were covered through the clouds playing hide and seek. Occasionally there would be an opening in the sky through which light would pour in and light up a part of the majestic range. Here the highlights are the peaks and the valleys.

## TUSHAR JOSHI



**Title:** Lotus  
**Camera:** Canon EOS 550 D  
**Aperture:** f/7.1  
**Date:** 28 Jan 2014  
**F. Speed:** 1/200 sec.  
**ISO:** 100  
**The Lotus (Nelumbo nucifera)** is short in Sargol (Datta-Maharashtra). In a bright sunshine, the colour of this lotus looked very attractive. Especially the lavender and pink shade is very appealing. The photo is shot from a close distance with a basic 50 lens (28-55mm). Even though lotus plant comes in mud, the beauty of the flower is just amazing.



**Title:** Butterfly  
**Camera:** Canon EOS 550 D  
**Aperture:** f/7.1  
**Date:** 24 Dec 2013  
**F. Speed:** 1/400 sec.  
**ISO:** 100  
**This tiny butterfly is from Pooch Hills, Thane (State Maharashtra). The size of the butterfly is a little more than 2.5 cm. Name of this butterfly is Dark Grass Blue (Gyania Karandira). Usually butterfly is less active in the early morning. Once the sun came up considerably, the shooting them is very difficult. You have to be on your knees or sleep on the turf to shoot such a small insect.**

## ANKITA SHAH



# NGMA-M

## KHUSHALI ASHAR



"Sublime Nature": V  
*Being DIFFERENT: "what if I do have the same skin, what if I do look like others? I am different and I'm as beautiful as they are" says little bird, what matters is the fact of being grounded and being a beautiful pure soul, which has no tendency to harm and it just lives.*  
 Khushali Ashar Photography  
 Camera: Canon EOS 110D, 1/180s,  
 Focal Length 50, Dia. F/2.0 ISO 100



"Sublime Nature": II  
*the Balance - Nature has the best symmetry, textures and patterns are omnipresent one cannot ignore its beauty, which is raw, pure and minimal. Nature is Hierarchical and leaves behind symmetry, previous things for the moment which are not there for the lifetime.*  
 Khushali Ashar Photography  
 Camera: Canon EOS 110D, 1/1600s,  
 Focal Length 50, Dia. F/4.0 ISO 200



"Sublime Nature": VI  
*The COLOR STORY: Imagine if nature had no color, it would have been the biggest step in itself as it possesses so many colors it is beautiful and Divine. God has granted humankind with the best paint palette ever and has set on forms which cannot be replaced.*  
 Khushali Ashar Photography  
 Camera: Canon EOS 110D, 1/180s,  
 Focal Length 50, Dia. F/2.0 ISO 100

## SAMEER OVALEKAR

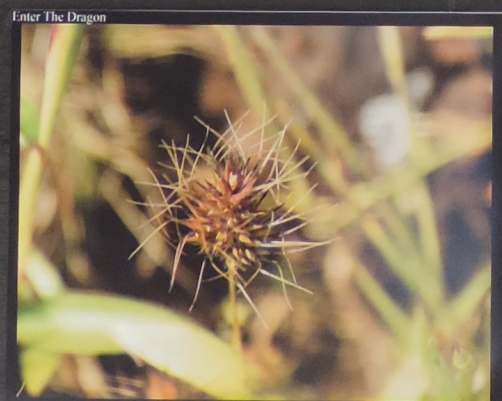


Camera: Nikon D850  
 Lens: Sigma 150 - 500  
 Aperture: f/8  
 Shutter: 1/800  
 ISO: 400  
 This is a female Ladakh Urial with lamb, a kind of wild sheep endemic to the region of Ladakh. A flock was observed at the late evening grazing some alpine and I had the opportunity to shoot this female who raised lambs for the lamb to catch up. The solitary cloud captures the "beauty" of solitude of motherhood to me.



Camera: Nikon D850  
 Lens: Nikon 18 - 55  
 Aperture: f/8  
 Shutter: 1/800  
 ISO: 400  
 The image is of a Common Rose Butterfly caterpillar on its host plant. It was shot at a butterfly park and outside Mumbai where the park owners had made a temporary enclosure for growing the host plant. The lighting of this enclosure provides the background.

## PRATIK JOYSAWAL



Enter The Dragon (Taken at Kaa Phatkar, Jalara, Maharashtra)  
 Photo Specification:  
 Camera Model: Canon 5D30  
 Exposure Time: 1/2000s  
 Focal Length: 100mm  
 ISO Speed: 100  
 F/No: 5.6  
 Aperture: 5.6  
 Camera: Canon 5D30  
 Exposure Time: 1/2000s  
 Focal Length: 100mm  
 ISO Speed: 100  
 Aperture: 5.6  
 Camera: Canon 5D30  
 Exposure Time: 1/2000s  
 Focal Length: 100mm  
 ISO Speed: 100  
 Aperture: 5.6  
 Date: 28<sup>th</sup> July 2014

Pratik Jayswal



Gone Green!!  
 Camera Model: Canon 5D30  
 Exposure Time: 1/2000s  
 ISO Speed: 100  
 F/No: 4  
 Aperture: 4  
 Camera: Canon 5D30  
 Exposure Time: 1/2000s  
 Focal Length: 100mm  
 ISO Speed: 100  
 Aperture: 4  
 Camera: Canon 5D30  
 Exposure Time: 1/2000s  
 Focal Length: 100mm  
 ISO Speed: 100  
 Aperture: 4  
 Date: 28<sup>th</sup> July 2014

Pratik Jayswal

**NGMA-M**

**HIMADRI BHUYAN**

**TUSHAR JOSHI**

**ANKITA SHAH**

**NGMA-M**

**KHUSHALI ASHAR**

**SAMEER OVALEKAR**

**PRATIK JOYSAWAL**

NGMA  
CELEBRATING  
ENVIRONMENTAL  
5<sup>th</sup> JUNE 2014





HIRAKSHU THAKKAR

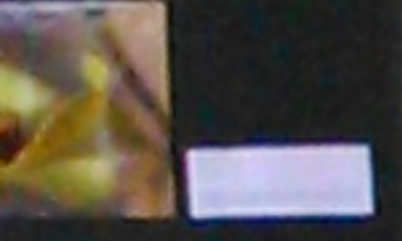
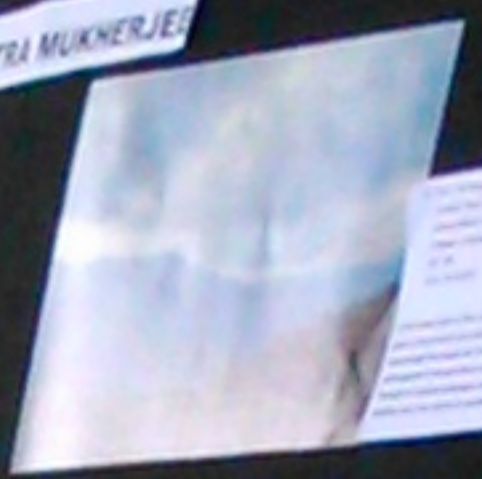
HAJIRITRA MUKHERJEE

VISHWESH BEHRE

TEENI DALAL

JAYDEEP PATIL

OMKAR TODARMAL





**HIMANSHU THAKKAR**



3. Camera Model: Sony DSC W320  
Aperture: F/8  
Focal length: 4.3 mm  
Exposure: 1/1000 sec  
In a view of Chomolungma Mountains. This stunning view is captured from one of the peaks of Chomolungma situated in France. It covers Chomolungma valley, beautiful snow mountains, glacier in bottom right, in the centre the peak are sitting on them covered with snow enjoying breathtaking nature.



1. Camera Model: Nikon D-5100  
Aperture: F/8  
Date: 10/3/2014  
Focal Length: 155 mm  
Exposure: 1/7000 sec  
It's a pair of Rufous Treepie bird found in Ranabambur sanctuary, Rajasthan, India. It is also famously known as a Friendly Bird. They are very friendly with the tourists and enjoy eating biscuits offered to them by sitting on the hands of tourists. Just giving them a personal touch.



3. Camera Model: Sony DSC W320  
Aperture: F/8  
Focal length: 4.3 mm  
Exposure: 1/1000 sec  
It's a village enroute Shovani to France. The village is surrounded by mountains from three sides and lake on one side.

**MAUMITRA MUKHERJEE**



3. Title: Untouched Rivers  
Camera model: Canon PowerShot A885  
Location: Ladakh, India  
Aperture: F/4.5  
ISO speed: 1/7000 sec.  
ISO: 100  
Date: 21/7/2012  
Ladakh, The Himalayan desert creates one of the most astonishing confluences of the Zaskar and the Indus River. Both the rivers with the distinct appearance form a beautiful partners in the breathtaking landscape and falls to astonish her viewers with her amazing unchanged colours.



1. Title: The House of the chosen one  
Location: Paro, Bhutan  
Camera Model: Canon EOS 1100D  
ISO Speed: 1/1000 sec.  
ISO: 100  
Date: 25/7/2014  
In the deep town of Paro, Bhutan, the heavily clouded skies play a strange game of illumination and darkness. In this image, a streak of light makes its way through the clouds and illuminates house in this quiet land. This land, with legends of reincarnations of gods and giant men seems to play itself through its mystical landscapes and hills. Could that mystic illumination possibly mean the rebirth of something auspicious in that house?

**ZEENIA DALAL**



04/09/12  
This image captures the red dripping out of the back of a worm, in the middle of the journey on the 5th F.O. (5000 ft) of Mt. It looks as if it is dripping red, the redness and this beautiful sight makes us all wonder how a piece of anatomy is so beautiful and sparkling within its shell.  
- ZEENIA DALAL (www.zeenia.com)

**VISHWESH BEHRE**



PHOTO 9165 Details  
Photo Title - Heaven on earth  
EXIF  
camera - Canon 1000D EOS  
Exp - 1/1250  
F - F/8  
ISO - 800  
Focal length - 18mm



PHOTO 9128 Details  
Photo Title - Beautiful Workplace  
EXIF  
camera - Canon 1000D EOS  
Exp - 1/250  
F - F/8  
ISO - 200  
Focal length - 18mm

**JAYDEEP PATIL**



Location & Title	Maharashtra, Near the temple, Near
Make	Canon EOS 100D
Focal Length	180mm
F Number	F8
Exposure time	1/2500 sec
Aperture	F8
ISO	100
White Balance	Auto
Flash	Off
Exposure Compensation	-0.33 EV
Color Space	sRGB



Location & Title	Maharashtra, Near Kolling
Make	Canon PowerShot A4000 IS
Focal Length	60mm
F Number	F5.6
Exposure time	1/2000 sec
Aperture	F5.6
ISO	100
White Balance	Auto
Flash	Off
Exposure Compensation	0



1. Canyon Canyon 0800  
Camera: Sony DSC-HX  
Aperture: F7.6  
ISO: 100  
Date: 25/06/2014  
Time: 10:55:15  
If we walk for the right amount that will lead us to someone we shall find help, some drinks, some equipment and give us some money to get back to the car.

**BHAVIK SHAH**



**KETAN MHATRE**

1. The Great Wall  
Camera: Sony DSC-HX  
Aperture: F7.6  
ISO: 100  
Date: 25/07/2012  
A beautiful view of the Great Wall of China from the top of a mountain. The wall is visible in the distance, stretching across the landscape. The sky is clear and blue.



1. The Great Wall  
Camera: Sony DSC-HX  
Aperture: F7.6  
ISO: 100  
Date: 25/07/2012  
A beautiful view of the Great Wall of China from the top of a mountain. The wall is visible in the distance, stretching across the landscape. The sky is clear and blue.

**UDAY KAWALE**



1. The Great Wall  
Camera: Sony DSC-HX  
Aperture: F7.6  
ISO: 100  
Date: 25/07/2012  
A beautiful view of the Great Wall of China from the top of a mountain. The wall is visible in the distance, stretching across the landscape. The sky is clear and blue.

**KANCHAN BHAT**



1. The Great Wall  
Camera: Sony DSC-HX  
Aperture: F7.6  
ISO: 100  
Date: 25/07/2012  
A beautiful view of the Great Wall of China from the top of a mountain. The wall is visible in the distance, stretching across the landscape. The sky is clear and blue.



1. The Great Wall  
Camera: Sony DSC-HX  
Aperture: F7.6  
ISO: 100  
Date: 25/07/2012  
A beautiful view of the Great Wall of China from the top of a mountain. The wall is visible in the distance, stretching across the landscape. The sky is clear and blue.



1. The Great Wall  
Camera: Sony DSC-HX  
Aperture: F7.6  
ISO: 100  
Date: 25/07/2012  
A beautiful view of the Great Wall of China from the top of a mountain. The wall is visible in the distance, stretching across the landscape. The sky is clear and blue.



1. The Great Wall  
Camera: Sony DSC-HX  
Aperture: F7.6  
ISO: 100  
Date: 25/07/2012  
A beautiful view of the Great Wall of China from the top of a mountain. The wall is visible in the distance, stretching across the landscape. The sky is clear and blue.

1. The Great Wall  
Camera: Sony DSC-HX  
Aperture: F7.6  
ISO: 100  
Date: 25/07/2012  
A beautiful view of the Great Wall of China from the top of a mountain. The wall is visible in the distance, stretching across the landscape. The sky is clear and blue.



1. The Great Wall  
Camera: Sony DSC-HX  
Aperture: F7.6  
ISO: 100  
Date: 25/07/2012  
A beautiful view of the Great Wall of China from the top of a mountain. The wall is visible in the distance, stretching across the landscape. The sky is clear and blue.

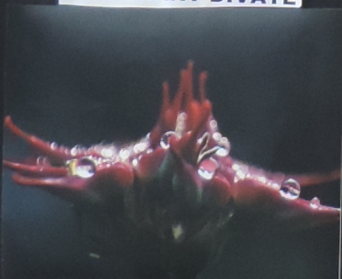
**RAMANAND N GARGE**



1. The Great Wall  
Camera: Sony DSC-HX  
Aperture: F7.6  
ISO: 100  
Date: 25/07/2012  
A beautiful view of the Great Wall of China from the top of a mountain. The wall is visible in the distance, stretching across the landscape. The sky is clear and blue.



1. The Great Wall  
Camera: Sony DSC-HX  
Aperture: F7.6  
ISO: 100  
Date: 25/07/2012  
A beautiful view of the Great Wall of China from the top of a mountain. The wall is visible in the distance, stretching across the landscape. The sky is clear and blue.



1. The Great Wall  
Camera: Sony DSC-HX  
Aperture: F7.6  
ISO: 100  
Date: 25/07/2012  
A beautiful view of the Great Wall of China from the top of a mountain. The wall is visible in the distance, stretching across the landscape. The sky is clear and blue.



1. The Great Wall  
Camera: Sony DSC-HX  
Aperture: F7.6  
ISO: 100  
Date: 25/07/2012  
A beautiful view of the Great Wall of China from the top of a mountain. The wall is visible in the distance, stretching across the landscape. The sky is clear and blue.



1. The Great Wall  
Camera: Sony DSC-HX  
Aperture: F7.6  
ISO: 100  
Date: 25/07/2012  
A beautiful view of the Great Wall of China from the top of a mountain. The wall is visible in the distance, stretching across the landscape. The sky is clear and blue.

**RAJPAL SHARMA**



1. The Great Wall  
Camera: Sony DSC-HX  
Aperture: F7.6  
ISO: 100  
Date: 25/07/2012  
A beautiful view of the Great Wall of China from the top of a mountain. The wall is visible in the distance, stretching across the landscape. The sky is clear and blue.