

Art in the Twenty-First Century - Season 6 Film Festival

1st September to 9th September, 2012

at the Auditorium, National Gallery of Modern Art,
#49, Palace Road, Bengaluru- 560052, Tel: 080-22342338, e-Mail:ngma.bengaluru@gmail.com

Change 1st September, 2012 Saturday 3.00pm 60 min



Ai Weiwei was born in Beijing, China in 1957. He infuses his sculptures, photographs, and public artworks with political conviction and personal poetry, often making use of recognizable and historic Chinese art forms in critical examinations of a host of contemporary Chinese political and social issues. In his sculptural works he often uses reclaimed materials—ancient pottery and wood from destroyed temples—in a conceptual gesture that connects tradition with contemporary social concerns. Ai Weiwei lives and works in Beijing, China.



El Anatsui was born in Anyako, Ghana in 1944. Many of Anatsui's sculptures are mutable in form, conceived to be so free and flexible that they can be shaped in any way and altered in appearance for each installation. Working with wood, clay, metal, and—most recently—the discarded metal caps of liquor bottles, Anatsui breaks with sculpture's traditional adherence to forms of fixed shape while visually referencing the history of abstraction in African and European art. El Anatsui lives and works in Nsukka, Nigeria.

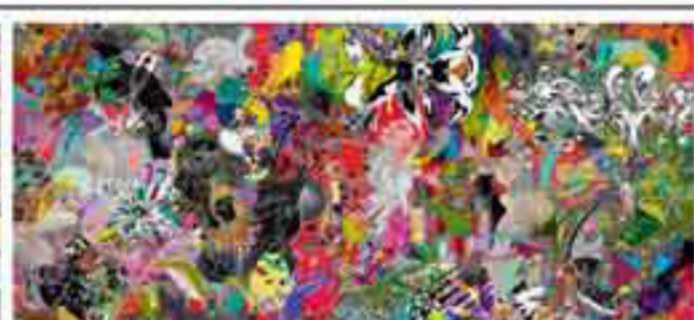
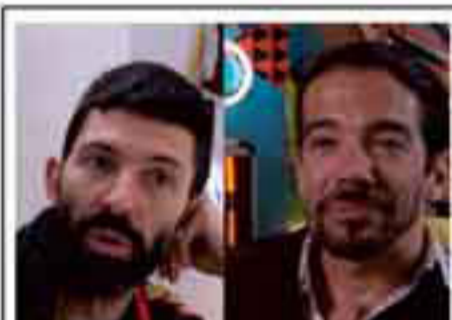


Catherine Opie was born in Sandusky, Ohio in 1961. Opie investigates the ways in which photographs both document and give voice to social phenomena in America today, registering people's attitudes and relationships to themselves and others, and the ways in which they occupy the landscape. Her work resonates with formal ideas that convey the importance of "the way things should look," evidence of the influence of her early exposure to the history of art and painting. Catherine Opie lives and works in Los Angeles, California.

Boundaries 2nd September, 2012 Sunday 11.30 am 60 min



David Altmejd was born in Montreal, Canada in 1974. In dazzling displays of active sculpting—holes and passages pushed through forms to drive matter "somewhere else"—Altmejd's work expresses the intense flow of energy traveling through space and teeters between investigations of sexuality, decay, spirituality, death, and—always—life. David Altmejd received a BFA from the Université du Québec à Montréal (1998) and an MFA from Columbia University (2001). David Altmejd lives and works in New York City.



The collective assume vivid astro focus (avaf) was formed in New York City in 2001. Its principal members are **Eli Sudbrack** (born in Rio de Janeiro, Brazil in 1968) and **Christophe Hamaide-Pierson** (born in Paris, France in 1973). Avaf fuses drawing, sculpture, video, and performance into carnivalesque installations in which gender, politics, and cultural codes float freely. Eli Sudbrack lives and works in New York City and São Paulo; Christophe Hamaide-Pierson lives and works in Paris.



Lynda Benglis was born in Lake Charles, Louisiana in 1941. A pioneer of a form of abstraction in which each work is the result of materials in action—poured latex and foam, cinched metal, dripped wax—Benglis has created sculptures that eschew minimalist reserve in favor of bold colors, sensual lines, and lyrical references to the human body. In more recent works, she explores diverse cultural heritages (Indian architecture, Greek statuary, Chinese ceramics), translating ancient techniques and symbols for use in contemporary contexts. Lynda Benglis lives, works, and travels between New York City; Santa Fe; Kastelorizo, Greece; and Ahmedabad, India.



Tabaimo was born in Hyogo, Japan in 1975. Tabaimo's drawings and video installations probe the unsettling themes of isolation, contagion, and instability that seem to lurk beneath daily existence in contemporary Japan. Tabaimo populates her work with uncanny characters that, either through mutation or as victims of inexplicable violence, become fragmented in their relationships to the environment and their own identity. Tabaimo lives and works in Nagano, Japan.

History 8th September, 2012 Saturday 3.00pm 60 min



Marina Abramović was born in Belgrade, Yugoslavia in 1946. A pioneer of performance as a visual art form, Abramović has used her body as both subject and medium of her performances to test her physical, mental, and emotional limits—often pushing beyond them and even risking her life—in a quest for heightened consciousness, transcendence, and self-transformation. Characterized by endurance and pain—and by repetitive behavior, actions of long duration, and intense public interactions and energy dialogues—her work has engaged, fascinated, and sometimes repelled live audiences. Marina Abramović lives and works in New York



Glenn Ligon was born in the Bronx, New York, in 1960. Ligon's paintings and sculptures examine cultural and social identity through found sources—literature, Afrocentric coloring books, photographs—to reveal the ways in which the history of slavery, the civil rights movement, and sexual politics inform our understanding of American society. Ligon appropriates texts from a variety of literary writers including Walt Whitman, Zora Neal Hurston, Gertrude Stein, James Baldwin, and Ralph Ellison, as well from more popular sources such as the comedian Richard Pryor. Glenn Ligon lives and works in New York City.



Mary Reid Kelley was born in Greenville, South Carolina in 1979. In videos and drawings filled with punning wordplay, Reid Kelley presents her take on the clash between utopian ideologies and the realities of women's lives in the struggle for liberation and through political strife, wars, and other historical events. Performing scripted narratives in rhyming verse, the artist—with her husband Patrick Kelley and various family members—explores historical periods through fictitious characters such as nurses, soldiers, prostitutes, and saltimbanques. Mary Reid Kelley lives and works in Saratoga Springs, New York.

Balance 9th September, 2012 Sunday 11.30 am 60 min



Rackstraw Downes was born in Kent, England in 1939. Often described as a realist painter, Downes prefers not to use that term. He views the act of seeing and the art of representation as culturally taught, with different cultures accepting different delineations of the world as realistic. He does not think of himself as a landscape painter, but as a painter of his surroundings—his environment. Often painted in a panoramic format, Downes's images evince careful attention to details as well as to broad expanses of their surroundings. Rackstraw Downes lives in New York City and Presidio, Texas.



Robert Mangold was born in North Tonawanda, New York in 1937. With classical restraint, Mangold translates the most basic of formal elements—shape, line, and color—into paintings, prints, and drawings whose simplicity of form expresses complex ideas. He renders the surface of each canvas with subtle color modulations and sinewy, handdrawn graphite lines. While his focus on formal considerations may seem paramount, he also delights in thwarting those considerations—setting up problems for the viewer. Robert Mangold lives and works in Washingtonville, New York.



Sarah Sze was born in Boston, Massachusetts in 1969. Sze builds her installations and intricate sculptures from the minutiae of everyday life, imbuing mundane materials, marks, and processes with surprising significance. Combining domestic detritus and office supplies into fantastical miniatures, she builds her works, fractal-like, on an architectural scale. On the edge between life and art, her work is alive with a mutable quality—as if anything could happen, or not. Sarah Sze lives and works in New York City.